

O6.1.1 – ANNEX 1

TECHNICAL PLANS – REVISIONS

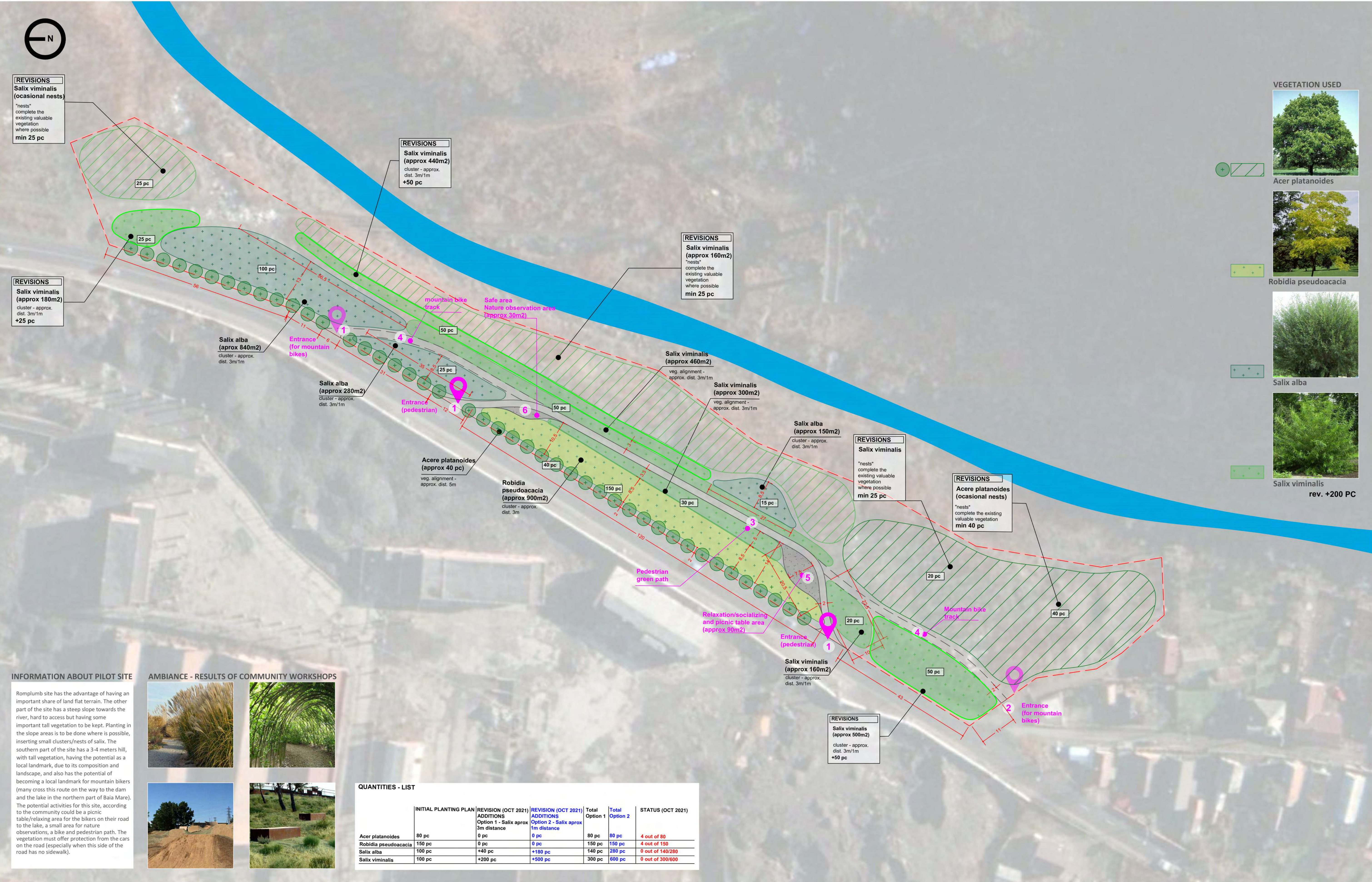


- 1 Romplumb Pilot Site – Technical Plans (planting) Revision
- 2 Ferneziu Pilot Site – Revision – Technical Plans (planting) Revision
- 3 Colonia Topitorilor Pilot site – Technical Plans (planting) Revision
- 4 Urbis Pilot Site – Technical Plans (planting) Revision

SPIRE BAIA MARE - TECHNICAL PLAN - PILOT SITE ROMPLUMB

ZONING AND PLANTING PLAN - AS A RESULT OF CO-CREATION PROCESS

DATE



VEGETATION USED



Acer platanoides



Robidia pseudoacacia



Salix alba



Salix viminalis

rev. +200 PC

INFORMATION ABOUT PILOT SITE

Romplumb site has the advantage of having an important share of land flat terrain. The other part of the site has a steep slope towards the river, hard to access but having some important tall vegetation to be kept. Planting in the slope areas is to be done where is possible, inserting small clusters/nests of salix. The southern part of the site has a 3-4 meters hill, with tall vegetation, having the potential as a local landmark, due to its composition and landscape, and also has the potential of becoming a local landmark for mountain bikers (many cross this route on the way to the dam and the lake in the northern part of Baia Mare). The potential activities for this site, according to the community could be a picnic table/relaxing area for the bikers on their road to the lake, a small area for nature observations, a bike and pedestrian path. The vegetation must offer protection from the cars on the road (especially when this side of the road has no sidewalk).

AMBIANCE - RESULTS OF COMMUNITY WORKSHOPS



QUANTITIES - LIST

	INITIAL PLANTING PLAN	REVISION (OCT 2021) ADDITIONS Option 1 - Salix aprox 3m distance	REVISION (OCT 2021) ADDITIONS Option 2 - Salix aprox 1m distance	Total Option 1	Total Option 2	STATUS (OCT 2021)
Acer platanoides	80 pc	0 pc	0 pc	80 pc	80 pc	4 out of 80
Robidia pseudoacacia	150 pc	0 pc	0 pc	150 pc	150 pc	4 out of 150
Salix alba	100 pc	+40 pc	+180 pc	140 pc	280 pc	0 out of 140/280
Salix viminalis	100 pc	+200 pc	+500 pc	300 pc	600 pc	0 out of 300/600

SPIRE BAIA MARE - TECHNICAL PLAN - PILOT SITE FERNEZIU

ZONING AND PLANTING PLAN - AS A RESULT OF CO-CREATION PROCESS

DATE



VEGETATION USED



Betula pendula



Salix viminalis



Parthenocissus quinquefolia



Miscanthus

INFORMATION ABOUT PILOT SITE

Ferneziu site is located near Nicolae Bălcescu school, in an area of low-density individual housing. The sense of community is very strong, the area having a rural ambience. The specific landscape is dominated by the hill on the east side. The Ferneziu site represented a degraded terrain, with spontaneous vegetation, impossible to access, creating a limit between the houses, and the river. The local landscape can be improved, the alignment of vegetation proposed having the role of a green screen, and the new nests of salix planted, creating a unitary landscape. The activities for this site are related to the nearby school, and the local community, creating an area where students can meet and have educational and nature observation activities.

AMBIANCE - RESULTS OF COMMUNITY WORKSHOPS

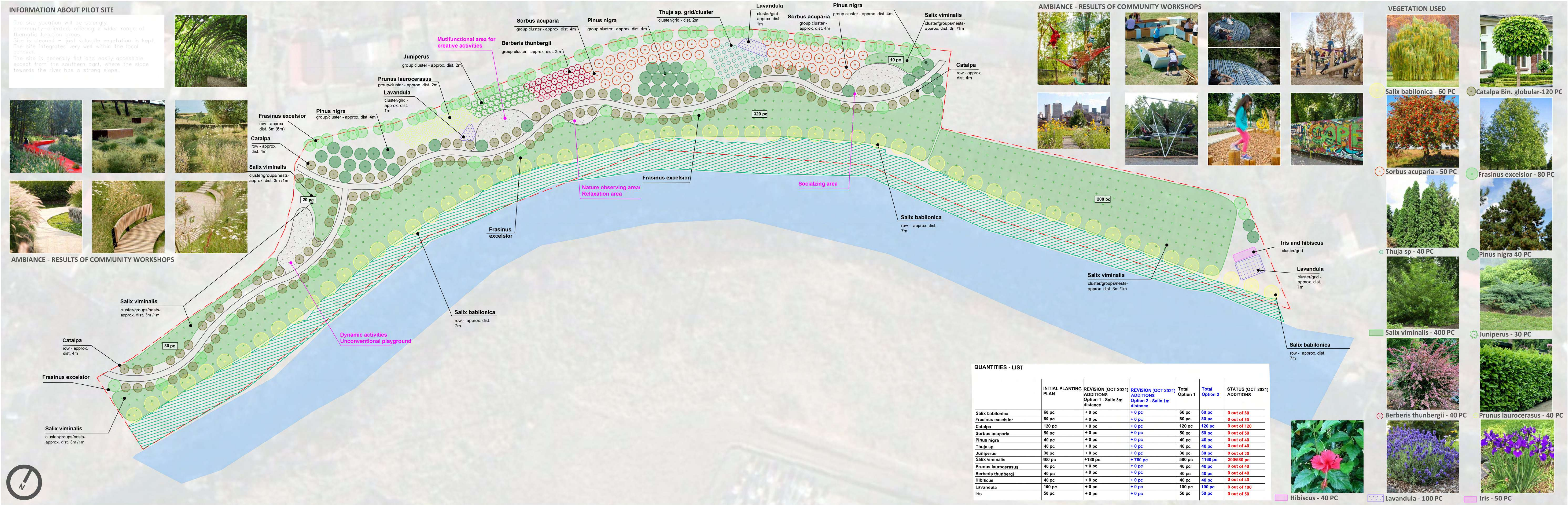


QUANTITIES - LIST

	INITIAL PLANTING PLAN	REVISION (OCT 2021) ADDITIONS	REVISION (OCT 2021) ADDITIONS	Total Option 1	Total Option 2	STATUS (OCT 2021) ADDITIONS
Betula pendula	30 pc	0 pc	0 pc	30 pc	30 pc	15 out of 30
Salix viminalis	250 pc	+270 pc	+750 pc	520 pc	1000 pc	250 out of 520/1000
Parthenocissus	360 pc	0 pc	0 pc	100 pc	100 pc	complete
Miscanthus	350 pc	+100 pc	0 pc	450 pc	450 pc	100 out of 450

SET OF ACTIONS

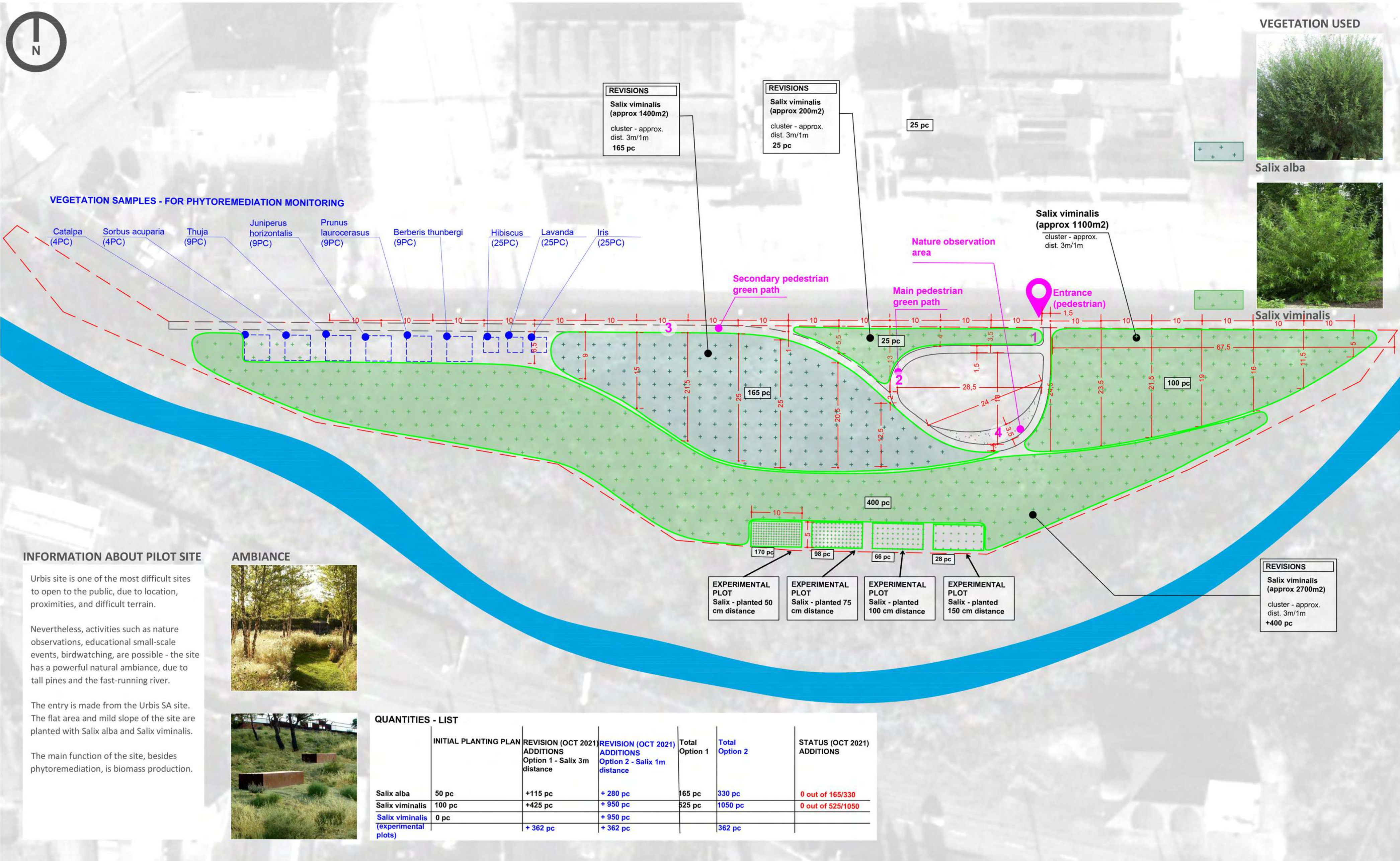
SPIRE BAIA MARE - TECHNICAL PLAN - PILOT SITE COLONIA TOPITORILOR
 ZONING AND PLANTING PLAN - AS A RESULT OF CO-CREATION PROCESS
 DATE



SPIRE BAIA MARE - TECHNICAL PLAN - PILOT SITE URBIS

ZONING AND PLANTING PLAN - AS A RESULT OF CO-CREATION PROCESS

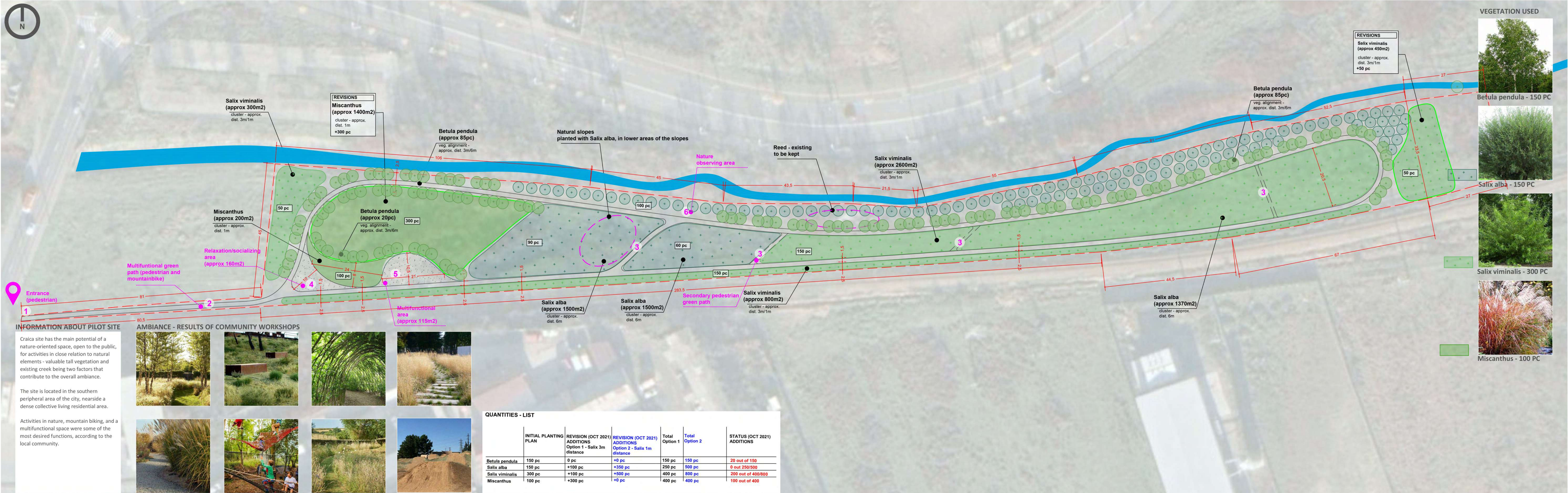
DATE



SPIRE BAIA MARE - TECHNICAL PLAN - PILOT SITE CRAICA

ZONING AND PLANTING PLAN - AS A RESULT OF CO-CREATION PROCESS

DATE



O6.1.1 – ANNEX 2

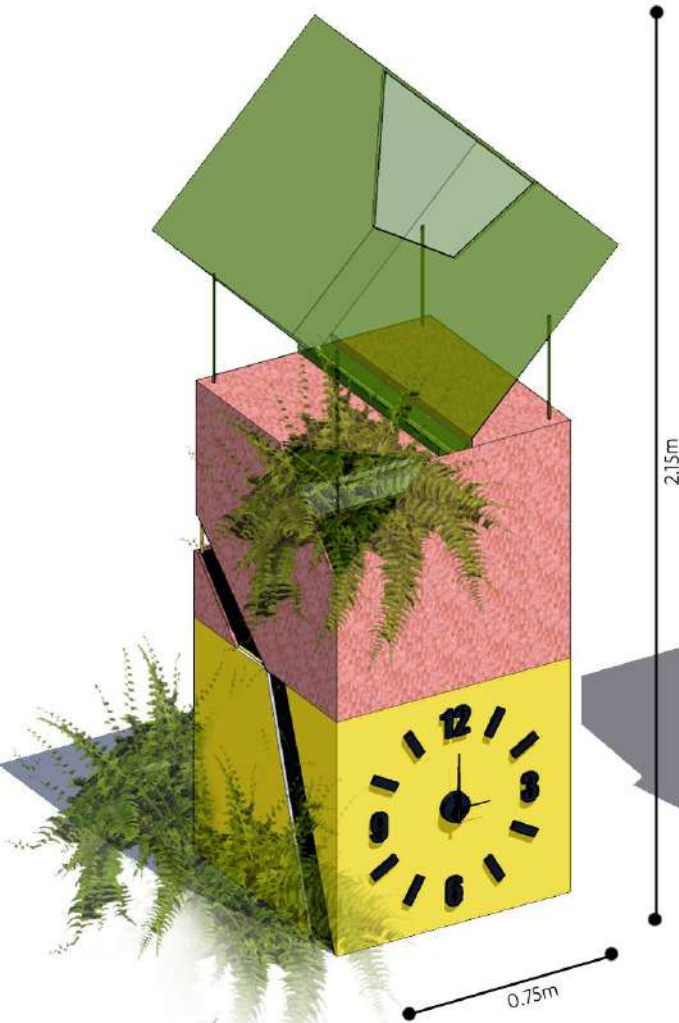
MICRO-INTERVENTIONS DESIGN



- 1 SPIRE Totem – Micro-intervention design
- 2 Modular Bench Social Interaction Space
- 3 Sitting Area Made of Recycled Biomass
- 4 Recycled Materials Micro-interventions

MICRO-INTERVENTIONS DESIGN 1

SPIRE TOTEM OPTION 1



SPIRE TOTEM OPTION 2



DESCRIPTION OF THE DESIGN

SPIRE TOTEM 1

Attendees to the 3rd co-design workshop created a deconstructed symbol, with the function of a clock. The message the attendees tried to convey is that the passage of time is inevitable, and our mistakes, of the society we form, cannot be reversed. Alternative remedies must be found.

The totem is composed of three sectioned cubes, which represent a pervious and translucent structure, allowing vegetation to grow within it. The middle cube is intended to be canvas for artwork.

SPIRE Totem represents a specific landmark encompassing the project essence, having the function to mark key areas of the site.

SPIRE TOTEM 2

Attendees to the 3rd co-design workshop created a symbol of Baia Mare past industrial activities and SPIRE journey. The SPIRE totem contains three distinct stages, representing the context of Baia Mare history and identity: (1) the base is a black cube, made of steel, representing past mining and metallurgic industry; (2) the middle module is the community of Baia Mare, youth, elders, families, workers. They stand in the middle of all; (3) the third module on top (made of wood) represent the new green identity and the more ecologic future of Baia Mare.

LIST OF MATERIALS / DESCRIPTION OF INTERVENTION

SPIRE totems are 0.75 m wide and 2.15 m high, made of a wooden frame. Depending on the design chosen, the faces of the cube will be plated with steel (corten), or translucent materials.

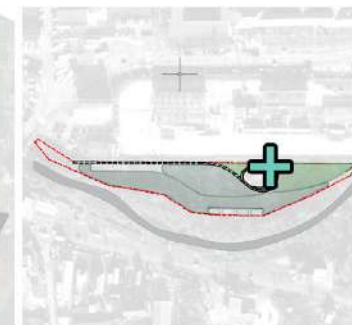
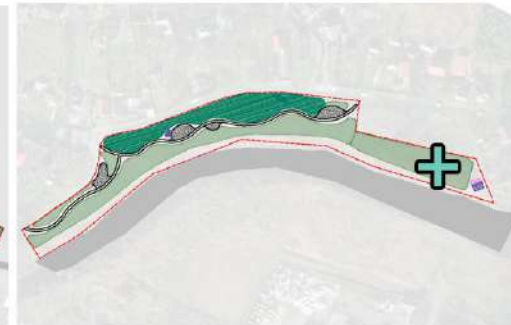
SPIRE TOTEM 1

Wood frame = 30m (40x40mm profile)
Steel sheets = 2,5 sqm (1750x1750mm for 1 sheet)
Timber = 2,5 sqm
Foundation = concrete bricks (400 x 200 x 195 mm)
Paint = 12 spraycans
Other materials: nails, screws, angles

SPIRE TOTEM 2

Wood frame = 30m (40x40mm profile)
Steel sheets = 5sqm (1750x1750mm for 1 sheet)
Timber = 2,5 sqm
Foundation = concrete bricks (400 x 200 x 195 mm)
Paint = 12 spraycans
Other materials: nails, screws, angles

POTENTIAL LOCATIONS



ROMPLUMB

FERNEZIU

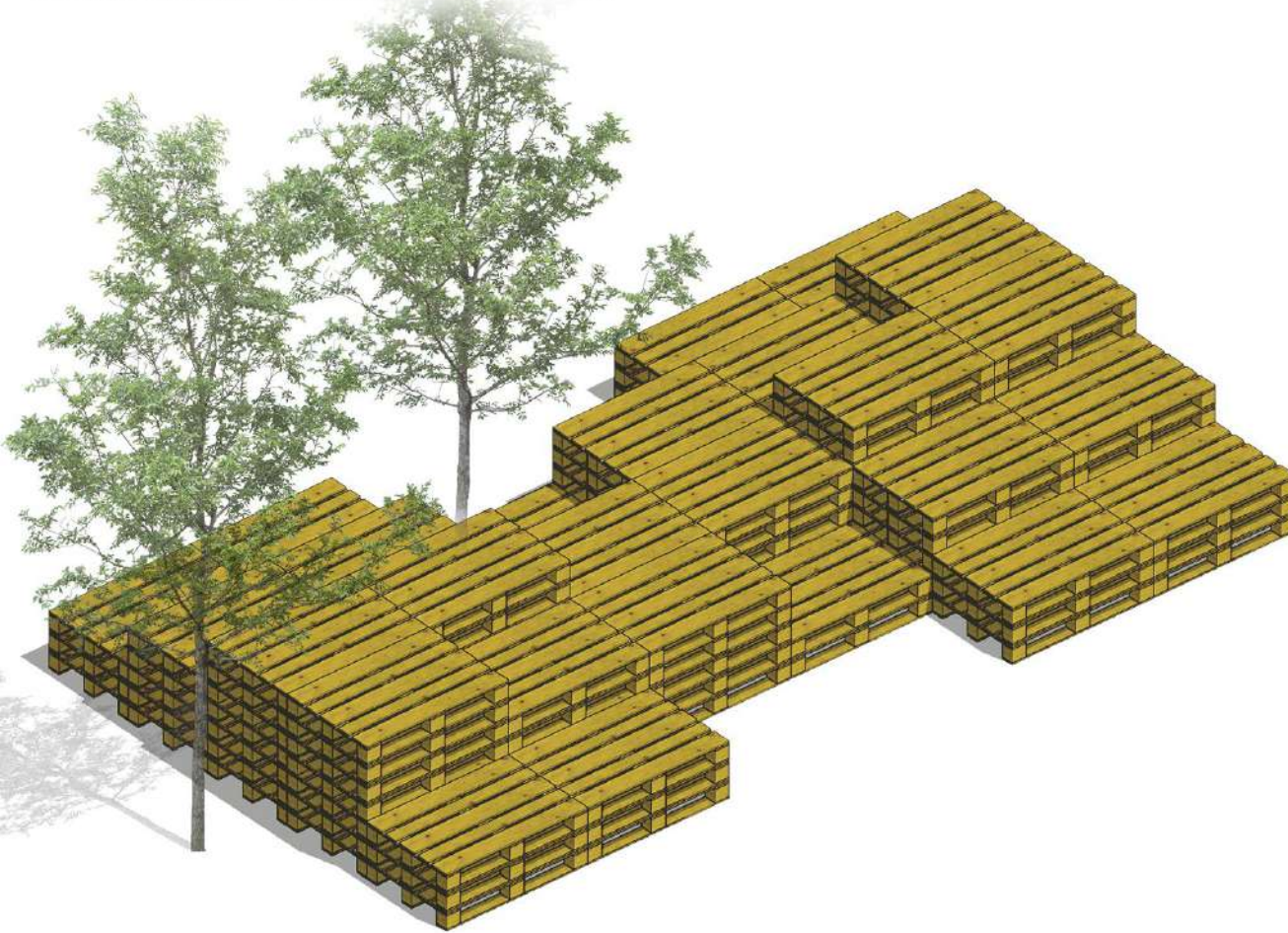
COLONIA TOPITORILOR

URBIS

CRAICA

MICRO-INTERVENTIONS DESIGN 2

MODULAR BENCH - SOCIAL INTERACTION SPACE



DESCRIPTION OF THE DESIGN

Attendees to the 3rd co-design workshop, designed a modular bench, made of recycled urban pallets. The design provides different options for resting, relaxation and social interaction. The sitting areas are on two different levels. The possibility of combining plants in the design is an option. The bench can provide openings through which the vegetation can grow.

This bench concept allows for multiple designs and spaces combinations. The scale can be reduced or increased depending on the necessities and the site requirements.

LIST OF MATERIALS / DESCRIPTION OF INTERVENTION

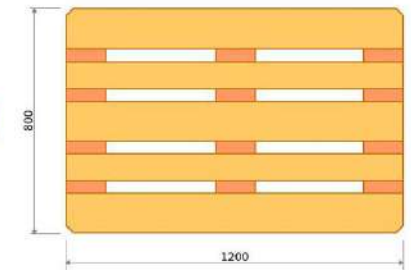
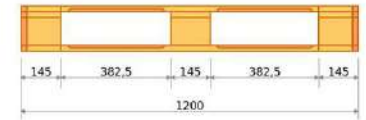
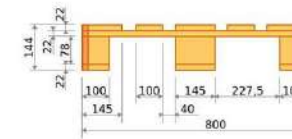
Option 1 - large scale design = total of 115 pallets

Option 2 - medium scale design = total of 80 pallets

Option 3 - small scale design = total of 40 pallets

Pallet standard dimension = 1200 x 800 x 145 mm

Other materials = nails, screws, angle fittings, varnish paint, sandpaper



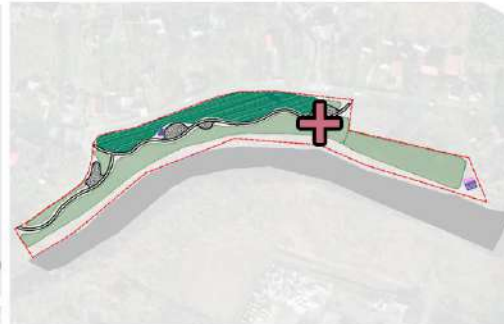
POTENTIAL LOCATIONS



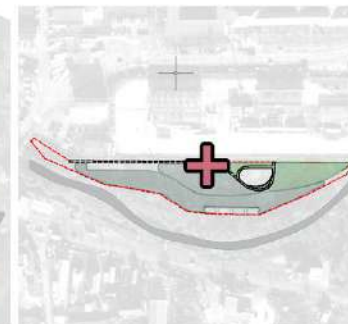
ROMPLUMB



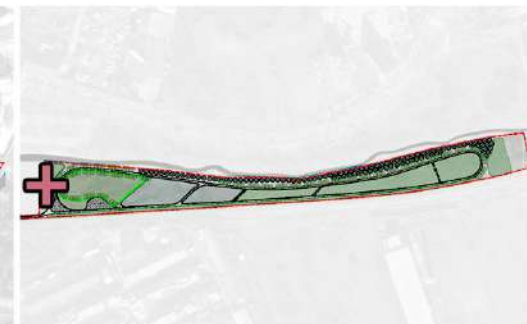
FERNEZIU



COLONIA TOPITORILOR



URBIS



CRAICA

MICRO-INTERVENTIONS DESIGN 3

SITTING AREA MADE OF RECYCLED BIOMASS



DESCRIPTION OF THE DESIGN

Attendees to the 3rd co-design workshop provided a series of micro-interventions options built recycled biomass and/or hay (or similar substitute). The solution represents a easy solution of upscaling harvested biomass directly on site.

LIST OF MATERIALS / DESCRIPTION OF INTERVENTION

Wooden pallet table = total of 8 palets
Pallet standard dimension = 1200 x 800 x 145 mm
Other materials = string, textile



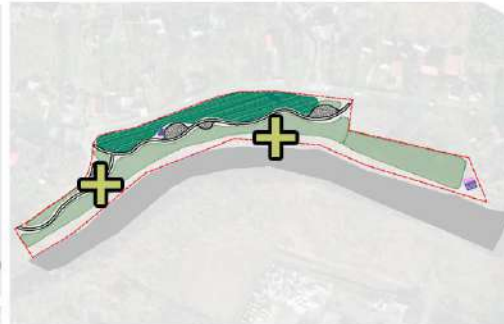
POTENTIAL LOCATIONS



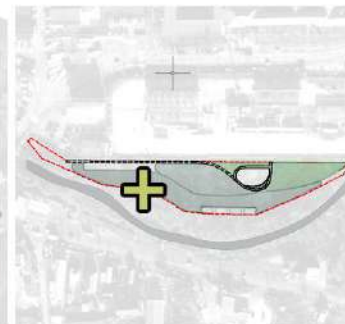
ROMPLUMB



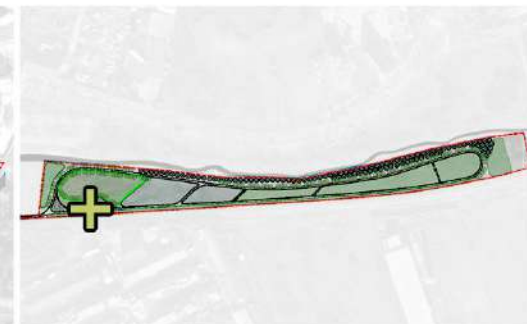
FERNEZIU



COLONIA TOPITORILOR



URBIS



CRAICA

MICRO-INTERVENTIONS DESIGN 4

RECYCLED MATERIALS MICRO-INTERVENTIONS



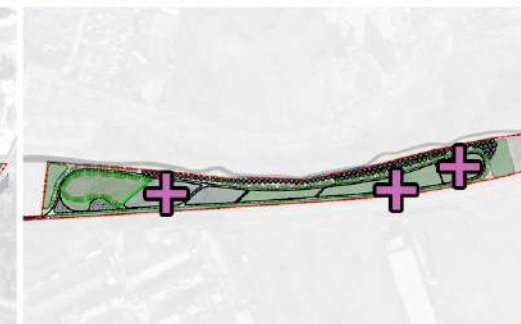
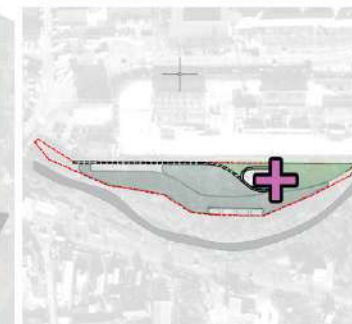
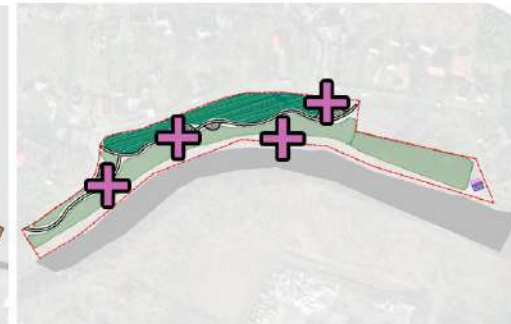
DESCRIPTION OF THE DESIGN

Part of the attendees to the 3rd co-design workshop did not focus on one detailed object, but instead they provided a series of sketches for a wide variety of potential interventions, that can be replicated in different contexts. The options are: (1) table made from wood barrel; (2) wooden table integrated around a tree; (3) recycled tires as benches or unconventional playgrounds; (4) sitting area from hay or recycled biomass; (5) hammocks placed among the trees.

These micro-interventions designs can change and adapt according to the available recycled resources. The final product will be subject to co-implementation the interventions with future users of the pilot sites.



POTENTIAL LOCATIONS



ROMPLUMB

FERNEZIU

COLONIA TOPITORILOR

URBIS

CRAICA